

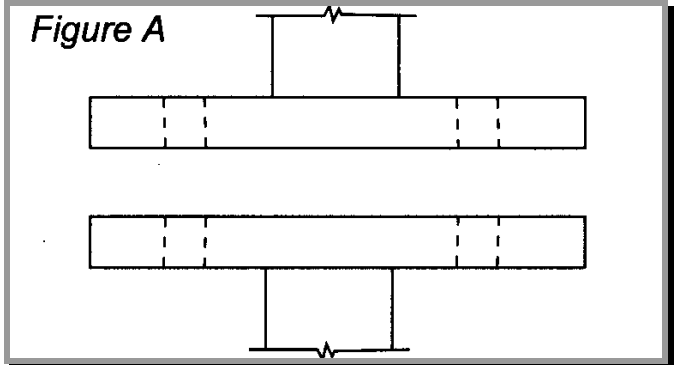
# Dent Breakaway Bolt ®™ Installation Instructions

Email: [info@dentbreakaway.com](mailto:info@dentbreakaway.com)

**Helps Save Ground Anchor & Post!**

## Step 1

- New Installation:** Go to step 2
- Retrofit Instructions:** Remove existing bolts and spread plates (See Figure A)
- Repair Instructions:** Remove damaged bolts by securing the bolt with a pair of vice grips and backing the nut off the bolt. (See Figure B)



## Step 2

Install the bolts with approved nuts and washers to the lower base plates. Tighten the nuts (See Figure C)

**NOTE: DO NOT HOLD THE TOP OF THE BOLT WHILE TIGHTENING THE BOTTOM NUT. HOLD BELOW THE BREAKPOINT, OR CRACKING COULD OCCUR**

## Step 3

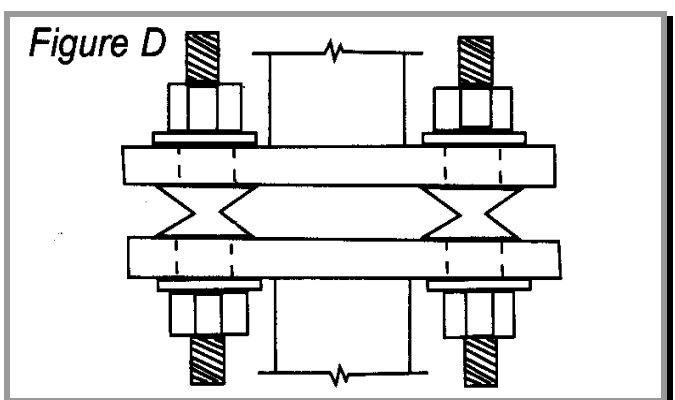
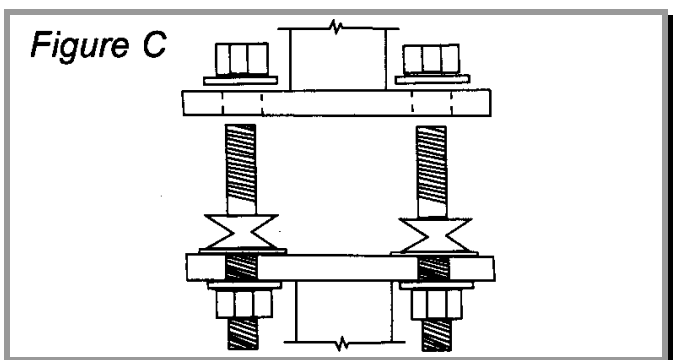
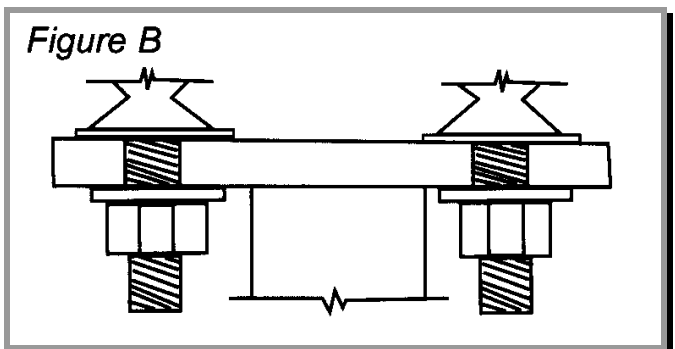
Lower the sign structure plate onto the top portion of the bolts and install upper washer and nuts. (See Figure D)

If the keeper plate is damaged, it is not necessary to replace it. The bolts should be wrench tightened to prevent the nuts from working loose. There are no torque requirements.

**(All bolts must be in place before final tightening)**

### Special Notes:

- Approved nuts and washers are required
- Be sure to tighten nuts evenly in a diagonal pattern, on sides of the flange so that the two plates remain horizontal to each other.
- In the case of any discrepancies or defects, the engineer and manufacturer must be notified immediately
- Both plates must be clean and flat to prevent stretching of the bolt from the uneven section causing cracking



## INFORMATION

DENT BREAKAWAY IND, INC.  
CLIFFORD DENT, INVENTOR  
PO BOX 6007  
FARMINGTON, NM 87499  
FAX: (413) 383-0681  
Cell: (505) 486-0476